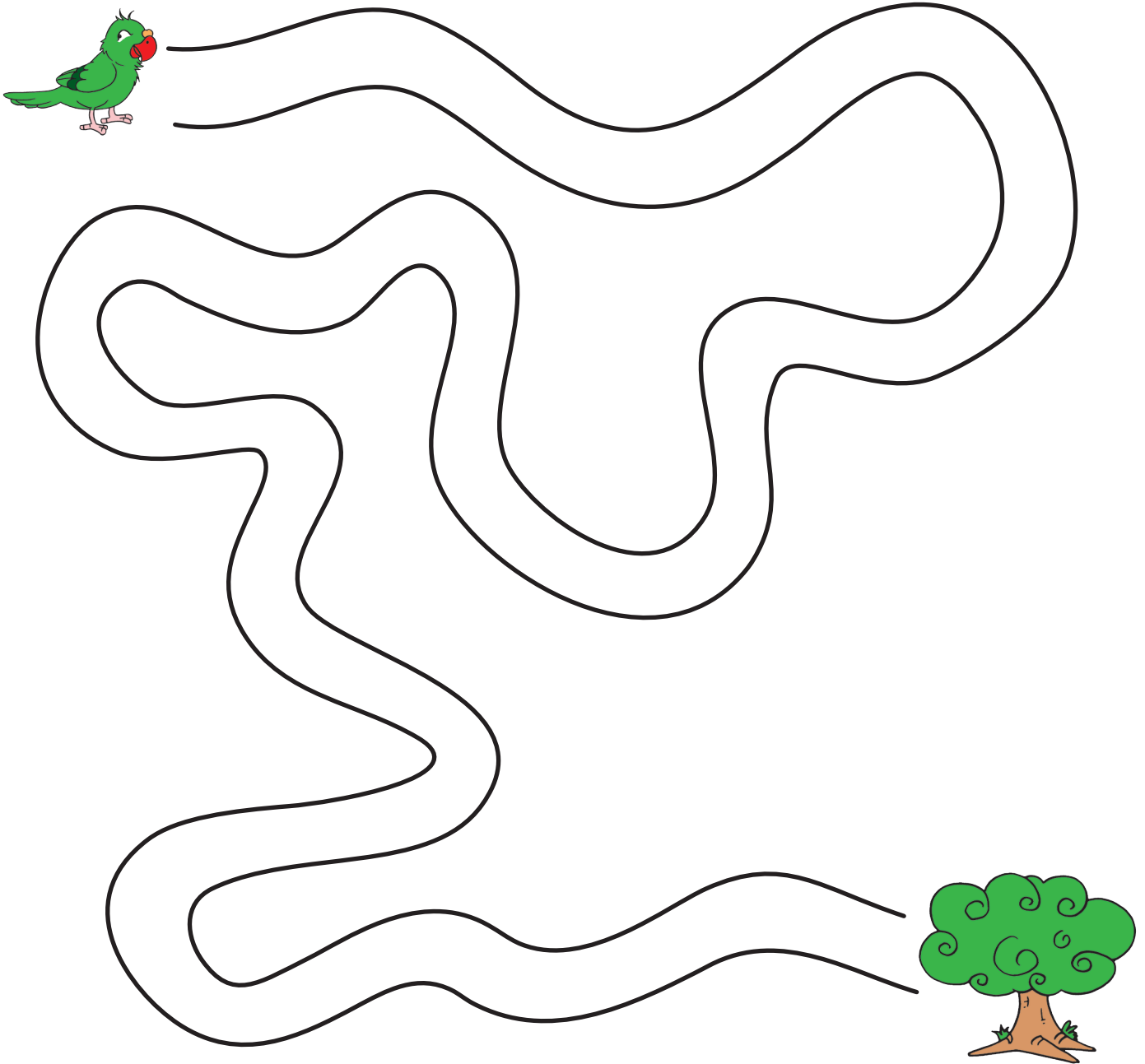


Strokes

Draw lines connecting the pictures. Encourage the child to stay in the middle of the path and not to touch the edges.



Dt:

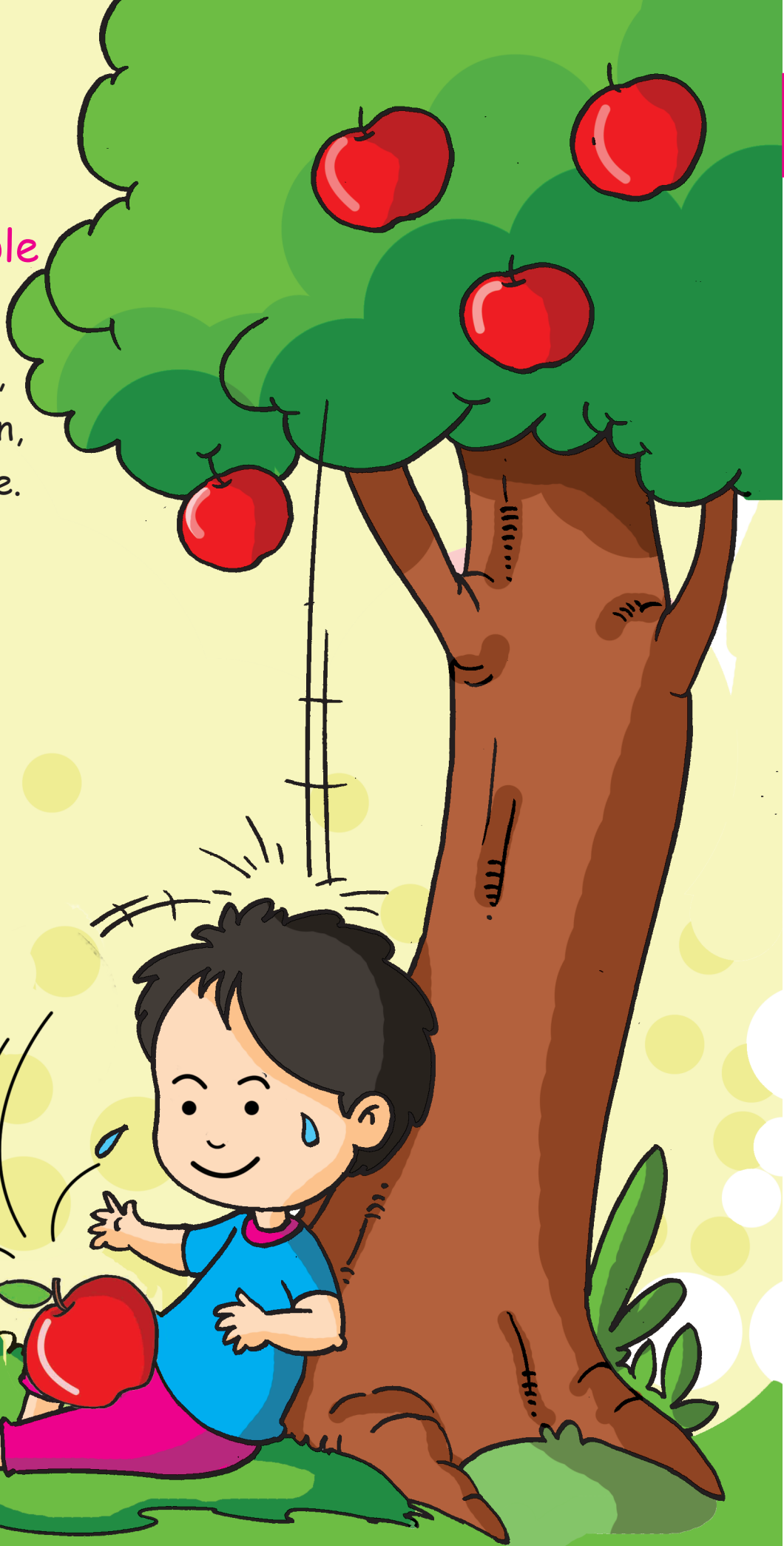
TS:

PS:

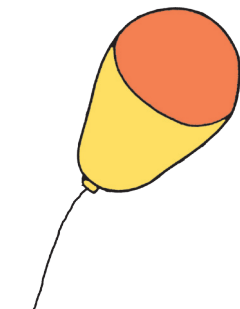
Rhyme

If I were an Apple

If I were an apple,
And grew on a tree,
I think I'd drop down,
On a nice boy like me.



Singular



Balloon



Plant

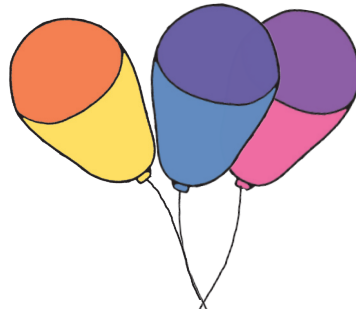


Bird



Lamp

Plural



Balloons



Plants



Birds

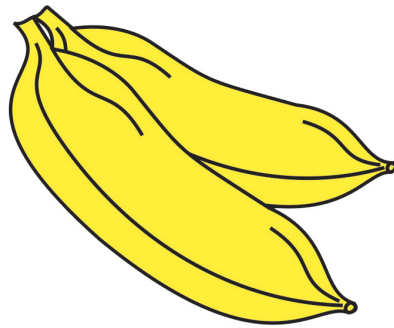
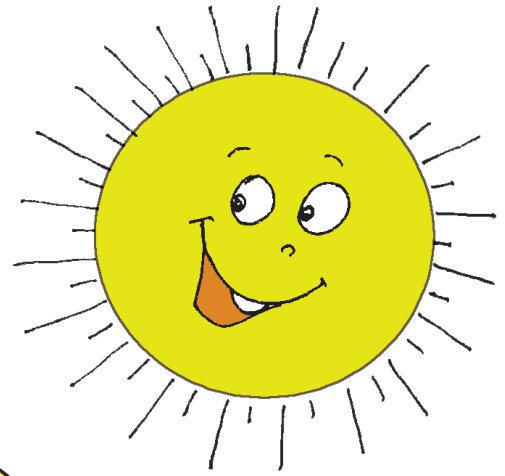
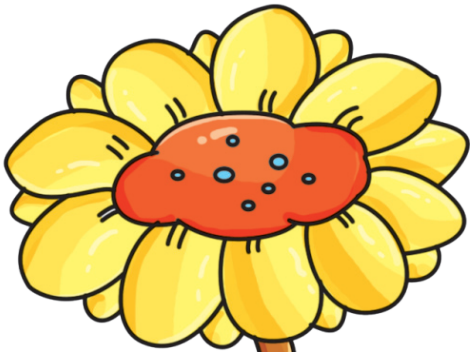


Lamps

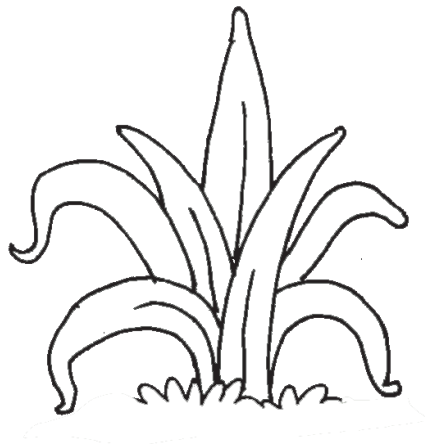
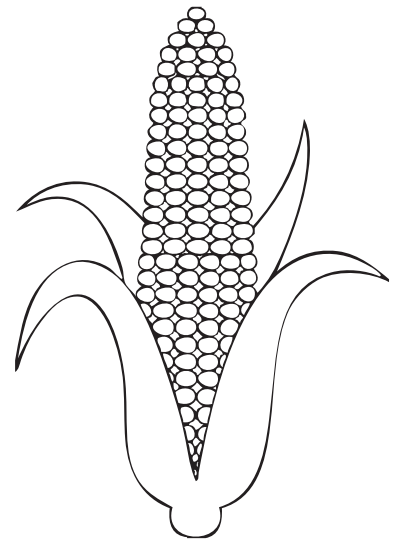
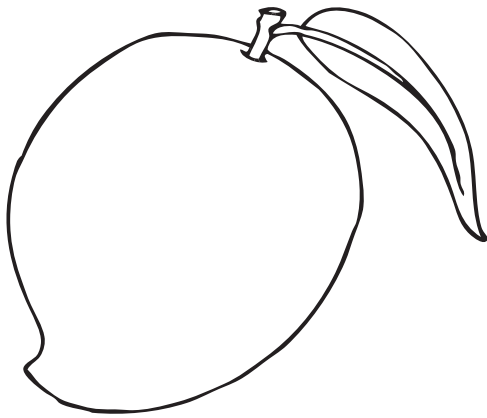
YELLOW

YELLOW

YELLOW



Colour what is yellow



Dt:

TS:

PS: